

# M-Bus Master-PW Series

*Compact M-Bus master level converter*

*Versions for 3, 20 or 60 slaves*

*Optical, RS232 or RS485 interface*

*Transmission speed up to 9600 baud*

*Short circuit and overvoltage proof*

*Operating state indicated by LED*

*Rail mounted*



**The master level converter series offers versions for 3, 20 and 60 M-Bus slaves. These devices are ideal for custom and economical M-Bus installations.**

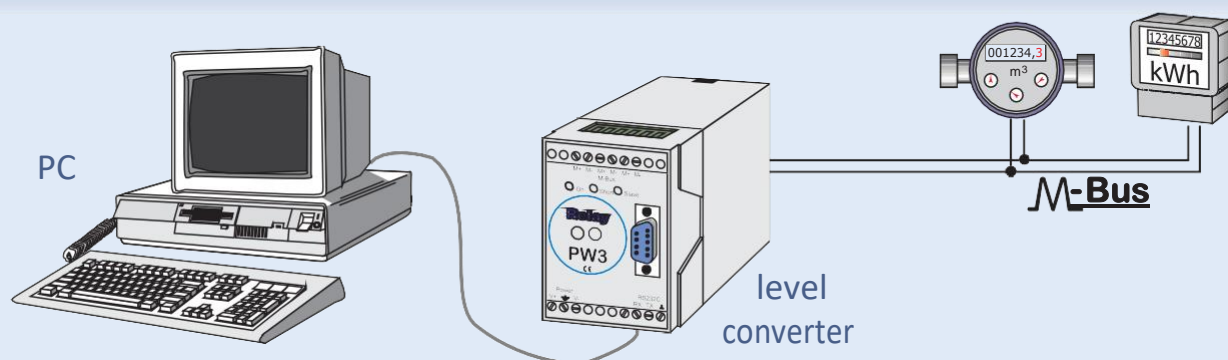
**All measured data can be recorded and processed by a connected computer system with suitable software. The PW series allows to setup parameters and read data from slaves on-site by a mobile computer. An integrated optical interface prevents the user from installing cumbersome cable connections.**

**It is also possible to transmit data from the M-Bus installation by the telephone network, using our M-Bus modem for level converters.**

**Relay**

**PadMess**

# For the custom-made M-Bus installation: PW3, PW20, PW60



## Function of the Master-PW devices

The devices in the PW series are M-Bus master interfaces for networks with 3, 20 and 60 slaves. They are compact in design (wall or rail mounting) and have a broad supply voltage range. The actual operating state is indicated by several LED at the front. All device versions in the PW series are equipped with a RS232 port. The control computer can communicate with the M-Bus meters by the integrated IR optical interface using a ZVEI optical head.

The PW60 has an additional noise-free RS485 port which enables greater distances between control computer and level converter.

## Advantages of the M-Bus system

- ✓ Cost-saving field bus system
- ✓ Two-wire bus supplying power to the bus users
- ✓ Large range (several kilometres)
- ✓ European standard (EN 1434)
- ✓ Good availability of system components
- ✓ Suited for applications at home and in industry
- ✓ Remote reading of consumption (water, heat, gas, electricity, ...)
- ✓ Total energy monitoring
- ✓ Data logging by mouse click
- ✓ Transmission rates up to 38400 baud

## Technical data

	PW3	PW20	PW60
Operating voltage:	10.8V .. 28V DC 10.8V .. 28V AC	10.8V .. 28V DC 10.8V .. 28V AC	20V .. 45V DC 20V .. 30V AC
Max. power input:	3.6W	7W	16W
M-Bus voltage (without load):	33V	32V	38V
Max. M-Bus quiescent current:	4.5mA (3 unit loads)	30mA (20 unit loads)	90mA (60 unit loads)
Internal bus resistance:	approx. 100Ω	approx. 100Ω	approx. 20Ω
Overcurrent threshold:	35mA	60mA	140mA
Transmission speed RS232:	300 .. 9600 baud	300 .. 9600 baud	300 .. 9600 baud
RS485:	--	--	300 .. 9600 baud
optical:	2400 baud	2400 baud	2400 baud
Galvanic isolation to M-Bus:	--	--	yes
Bit recovery:	--	--	yes
Temperature range:	0 .. 55 °C	0 .. 55 °C	0 .. 55 °C
Dimensions HxWxD / protection:	78 x 56 x 117mm / IP40	78 x 56 x 117mm / IP40	78 x 70 x 118mm / IP40

## Order information

Level converter PW60	Art.-No. MR004C
Level converter PW20	Art.-No. MR006
Level converter PW3	Art.-No. MR005
Plug-in power supply 12V DC 12W for PW3, PW20	Art.-No. NT003
Plug-in power supply 24V AC 18W for PW60	Art.-No. NT004

## Accessories

M-Bus modem for level converter	Art.-No. MOD003
Optical head for RS232-interface	Art.-No. OK001
<u>M-Bus readout-software:</u>	
Look@M-Bus for Windows95/98/NT	Art.-No. SW006
LocalService@M-Bus (time modul)	Art.-No. SW006Z
M-Bus OLE Server for Windows95/98/NT	Art.-No. SW005

**Relay**

**dset**  
ENERGY

### DSET ENERGY

Parque Científico y Tecnológico de la UdG  
Edificio Giroemprèn, Despacho A.2.16 -  
C/ Pic de la Peguera, 11 - 17003, Girona,  
España

Tel: (+34) 972 96 51 90, info@dset-energy.com  
www.dset-energy.com