

---

---

# INTRODUCTION

## 1. GENERAL DESCRIPTION

Model No
ADA-280SW-868MHz-1.5M-SMA/M

### 1.1 Electrical Properties

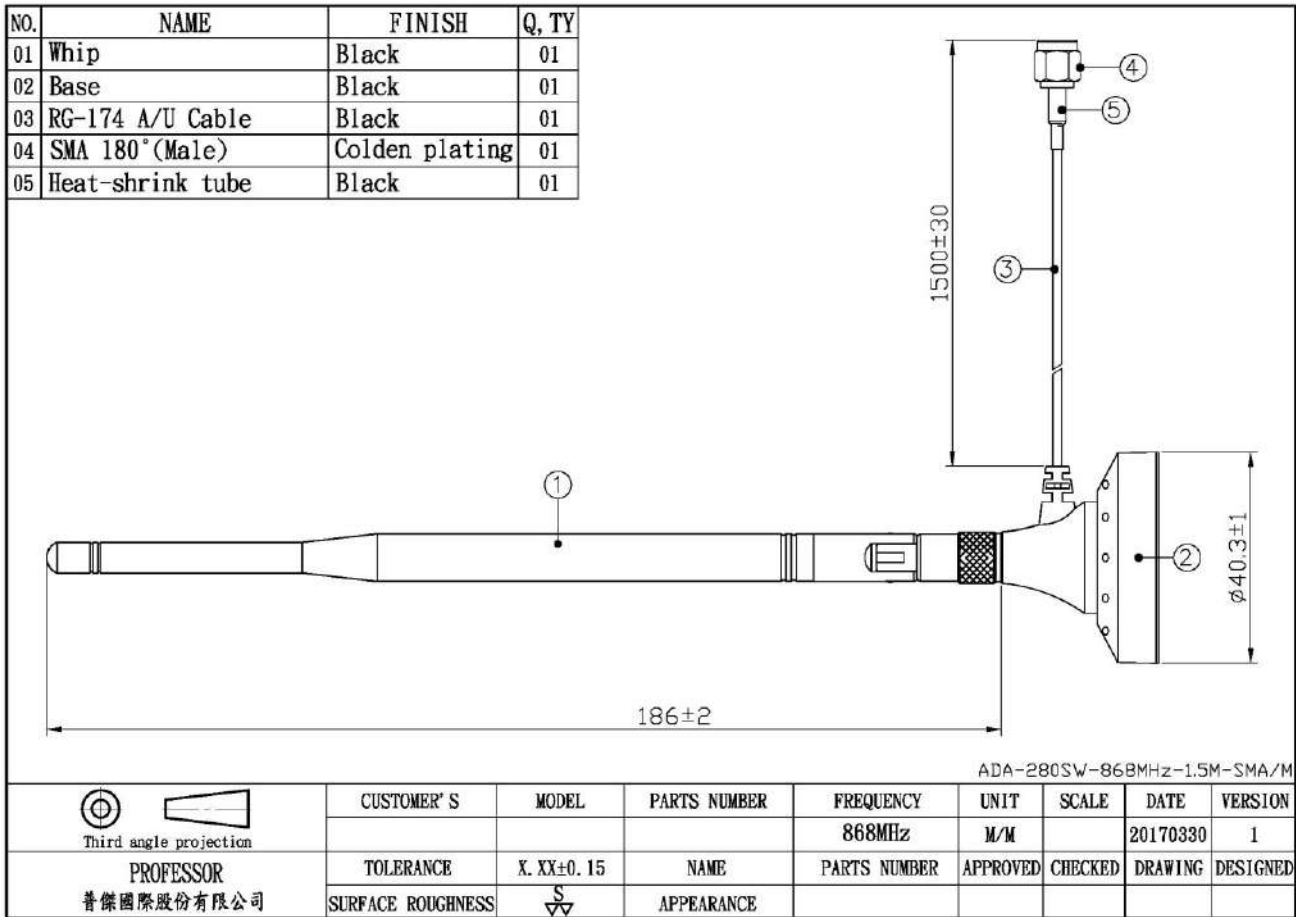
Parameter	Description
Frequency Band	868MHz
Nominal Impedance	50 ohm
Polarization	Vertical
V.S.W.R	2.0 : 1

### 1.2 Mechanical Properties

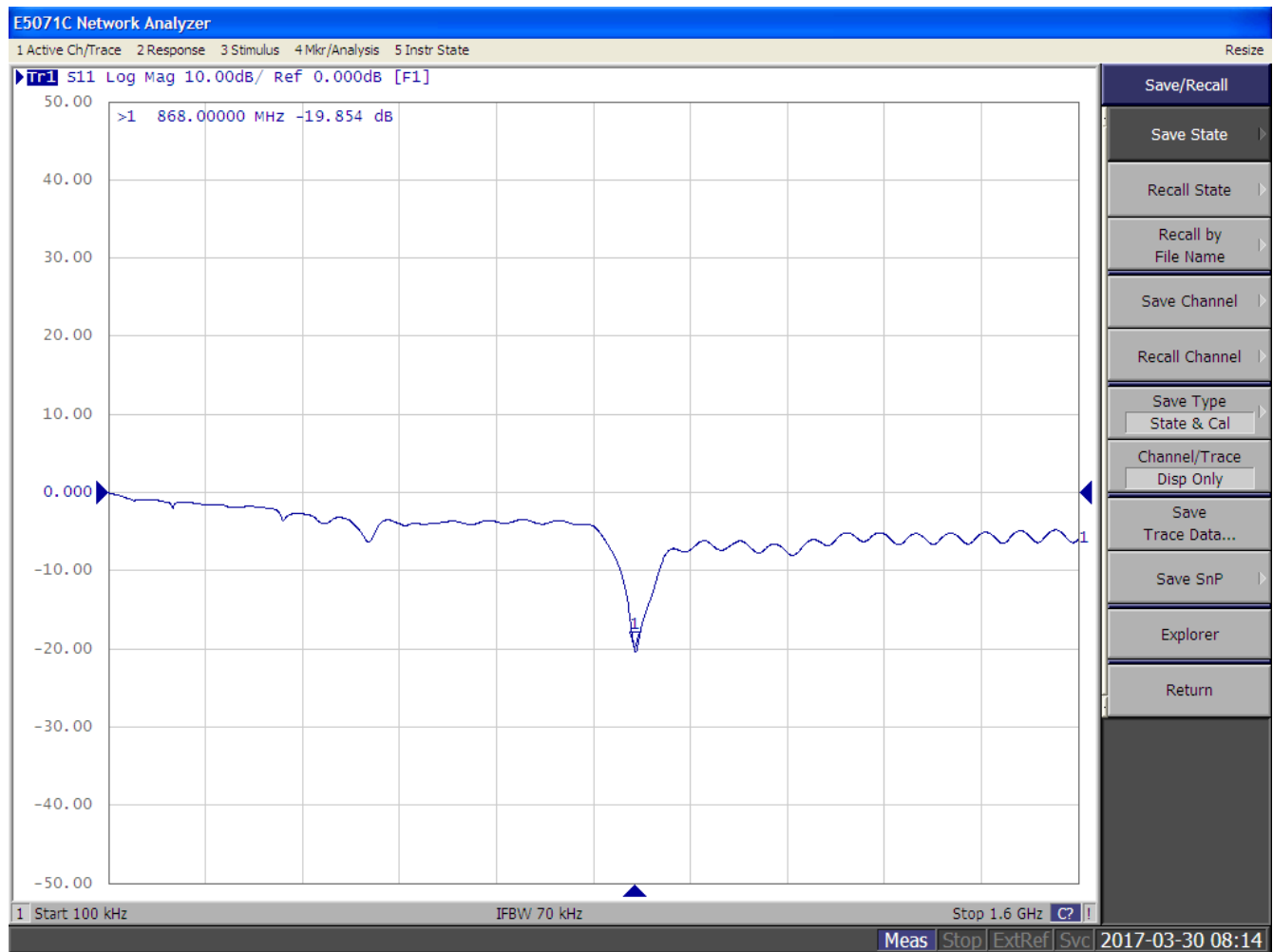
Parameter	Description
Antenna Type	External Antenna
Touch Type	Screw Type
Connector Type	SMA 180°(Male)
Antenna Dimensions	186±2
Antenna Cable Total Length	RG-174 A/U 1500 mm ±30
Antenna Color	Black
Operating Temperature Range	-20°C~+60°C
Storage Temperature Range	-30°C~+70°C

---

## 2. Appearance



### 3. Return Loss, V.S.W.R. and Smith Chart

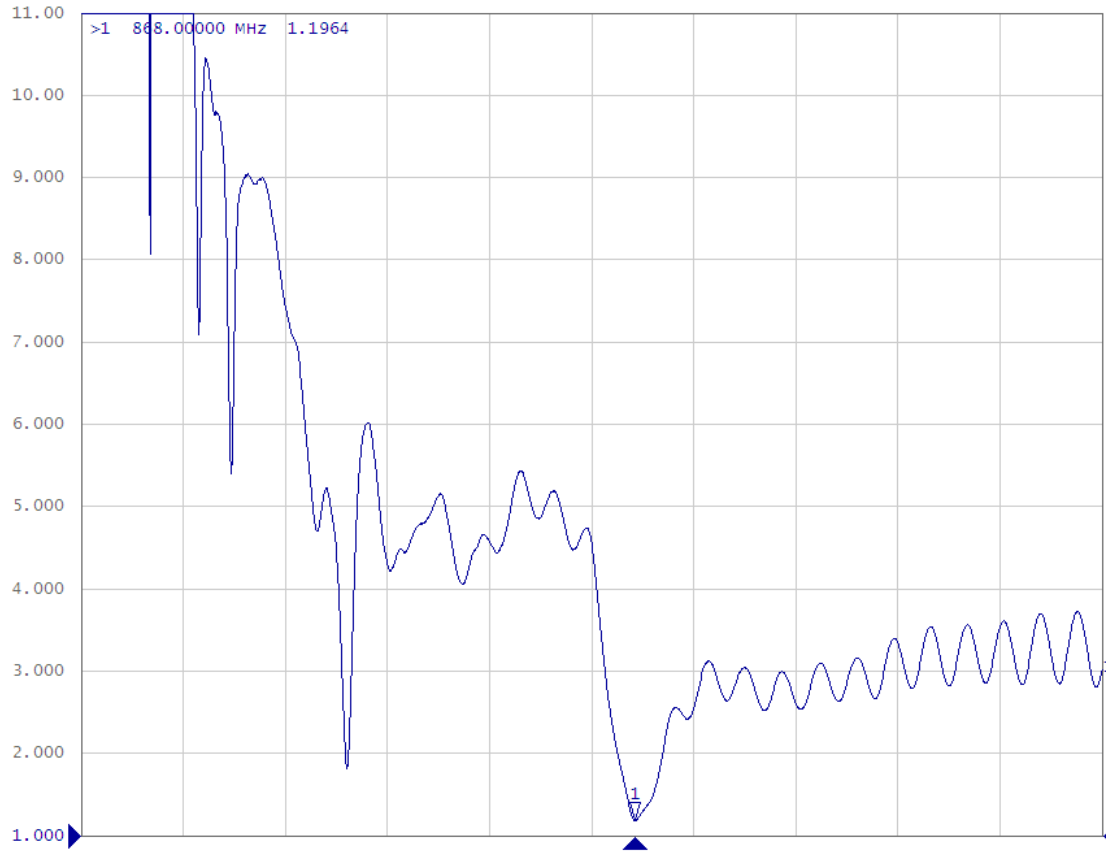


E5071C Network Analyzer

1 Active Ch/Trace 2 Response 3 Stimulus 4 Mkr/Analysis 5 Instr State

Resize

Tr1 S11 SWR 1.000/ Ref 1.000 [F1]



Start 100 kHz IFBW 70 kHz Stop 1.6 GHz

Meas Stop ExtRef Svc 2017-03-30 08:15

System

Print

Abort Printing

Printer Setup...

Invert Image

ON

Dump Screen Image...

Multiport Test Set Setup

Misc Setup

Backlight

ON

Firmware Revision

Service Menu

Help

Return

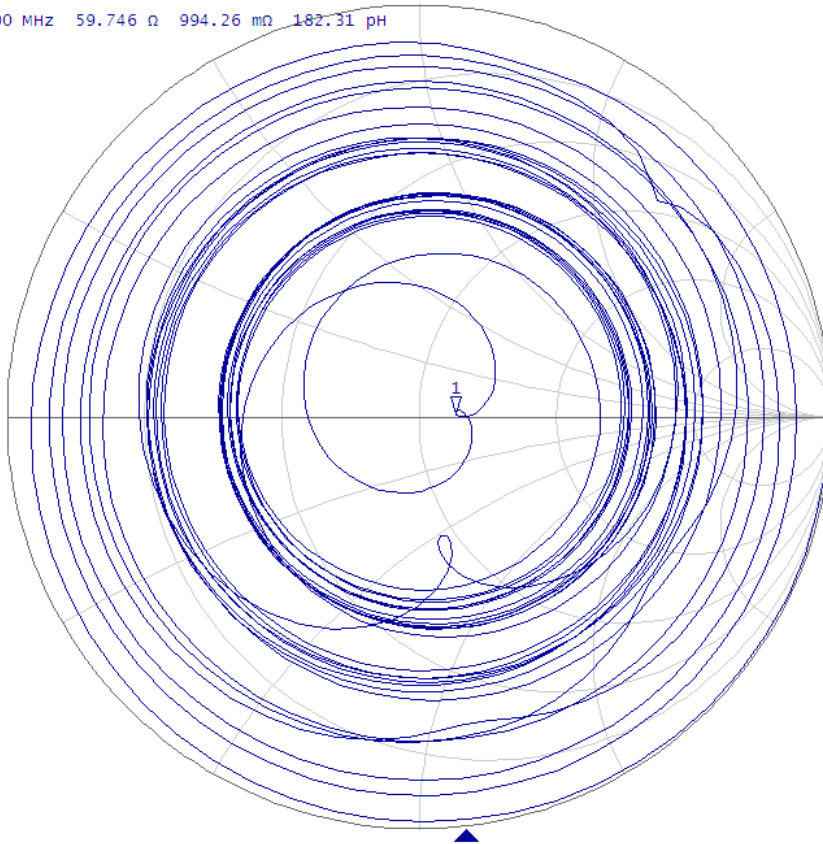
E5071C Network Analyzer

1 Active Ch/Trace 2 Response 3 Stimulus 4 Mkr/Analysis 5 Instr State

Resize

▶ Tr-1 s11 Smith (R+jX) scale 1.000U [F1]

>1 868.00000 MHz 59.746 Ω 994.26 mΩ 182.31 pF



1 Start 100 kHz

IFBW 70 kHz

Stop 1.6 GHz

Meas Stop ExtRef Svc

2017-03-30 08:16

Format

Smith (R+jX)

Log Mag

Phase

Group Delay

Smith

R + jX

Polar

Lin Mag

SWR

Real

Imaginary

Expand

Phase

Positive

Phase

Return