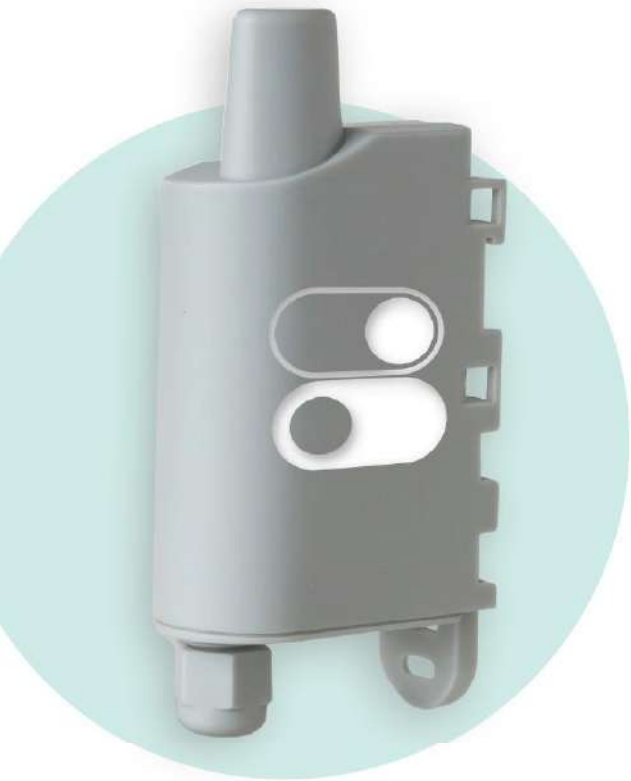


DRY CONTACTS



FUNCTION

Dry Contact | 0-1 status

Report 0-1 statuses and control relays.



ACT

- Activate or restart machines and equipment items remotely



ALERT

- Provide feedback about faults, level alerts
- Detect an intruder's presence, or detect an action
- Control access and break-ins



MONITOR

- Count the number of changes in status

BENEFITS

- 4 configurable inputs/outputs
- Locally and remotely configurable
- Low power consumption for optimal autonomy
- Develop new preventive maintenance services, alerts services, or analysis services.

DSET ENERGY

Parque Científico y Tecnológico de la UdG
Edificio Giroemprèn, Despacho A.2.16 –
C\ Pic de Peguera, 11-17003, Girona, España
GIRONA - BARCELONA

Telf: (+34) 972 96 51 90, info@dset-energy.com
www.dset-energy.com

PRODUCT USES



Monitoring of the occupancy of the rooms in your building in order to optimize the management of the services.



Broadcast information instantly on a malfunction of an escalator, an elevator...

TECHNICAL SPECIFICATIONS

- Periodic modes or event-based modes
 - Replaceable battery
- Dimensions: 105 x 50 x 27 mm
 - Box: IP67 (IP68 on request)
- Integrated fastening system: DIN rail, tube, wall, flange
- Zone: sigfox: RC1 / LoRaWAN: EU863-870 / W-Mbus: 868
- Operating temperature range: -20°C to + 75°C
 - Weight: 90g
- Standards: Directive 2014/53/EU (RED)
- Product error alert, configuration error, low battery
 - Configurable Life Screen

DSET ENERGY