

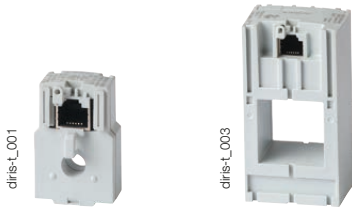
Connections

Associated current sensors

Different types of current sensor are linked to DIRIS B: closed-loop (TE), normally closed (TR/iTR) or flexible (TF). This range of sensors can be adapted to all types of new or existing installations. A rapid RJ12 connection makes wiring easy and reliable and prevents wiring errors. The size and type of sensor are recognised automatically by DIRIS B. This makes it possible to ensure total precision of the DIRIS B measurement chain + current sensors.

For more information, see the page on "TE, TR/iTR, TF sensors".

TE solid current sensors



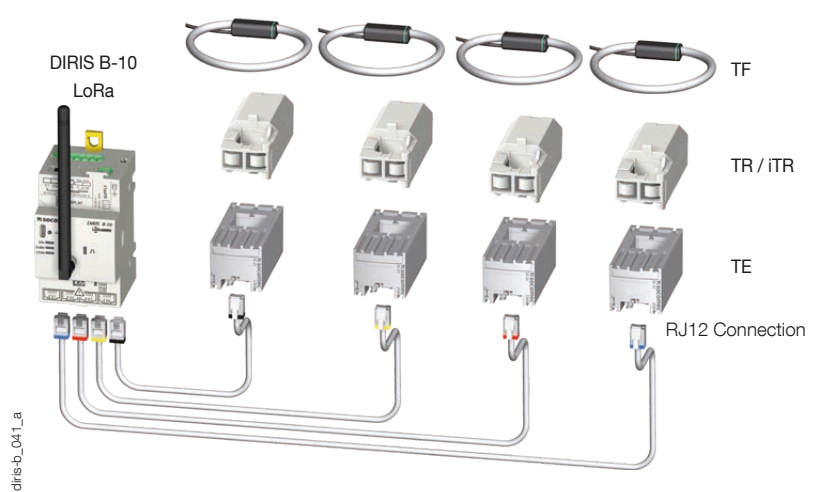
Normally closed TR/iTR



TF Flexible current sensors



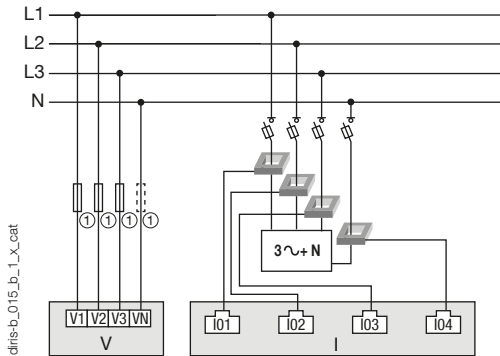
Current sensors TE / TR / iTR / TF



Network and connection examples

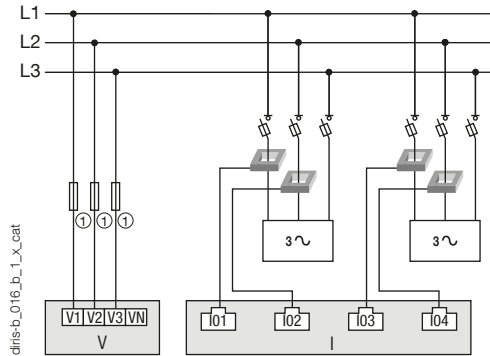
Three-phase + Neutral

3P+N - 4CT (measurement for 1 three-phase load + Neutral)



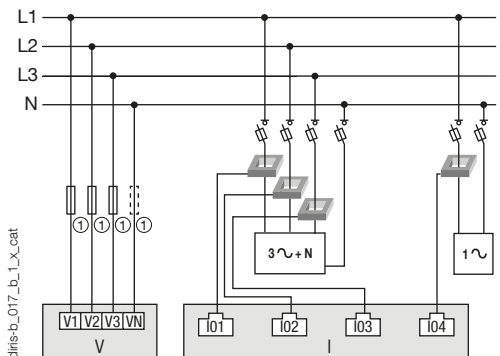
Three-phase

3P - 2CT (2 three-phase loads without neutral)



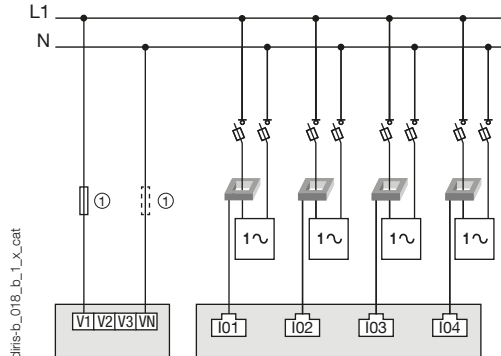
Three-phase

3P+N - 3CT & 1P+N - 1CT (1 three-phase load & 1 single-phase load)



Single-phase

1P+N-1CT (4 single-phase loads)



1. 0.5 A gG / 0.5 A class CC fuses.

On units with an autonomous power supply, a fuse must be added to the neutral wire.



CT: Current sensor



Load